
SPONSORSHIP PROPOSAL

AN EVENING OF HOPE

RIVER ROAST
315 N LA SALLE ST, CHICAGO, IL



An Evening of
HOPE

Friday NOV. 15

TICKETS:

AnEveningOfHope.us



The Mike & Sandy Ernsdorff
Childhood Cancer Foundation

Contact

Phone 312-515-9490

Website www.AnEveningOfHope.us

Email Michelle@CompassToCare.org

Address 6323 N Avondale Ave, Ste 250, Chicago, IL 60631

About Us

One in five children diagnosed with cancer lives in poverty. While many of those children are living in poverty at the time of diagnosis, some cross into a poverty profile as a result of cancer-related financial toxicity (CRFT).

For these children, poverty is associated with higher rates of relapse and decreased overall survival. Researchers have found transportation to be one of the drivers of poorer survival rates.

What can be done?

Compass to Care is proud to have three distinct nationwide non-emergency medical transportation (NEMT) solutions that directly and immediately remove the transportation barriers to cancer care for children with cancer who are living in poverty.

By supporting families in financial distress and removing the transportation barrier to access cancer treatment, Compass to Care is focused on preventing missed medical appointments and improving outcome for children living in poverty.



Vision

Compass to Care will be known for its transformative travel efforts that reduce the disparities in access to childhood cancer treatment and clinical trials.



Mission

The mission of Compass to Care is to provide a free non-emergency medical transportation (NEMT) solution to access life-saving cancer treatment and clinical trials for children fighting cancer and facing poverty or cancer-related financial toxicity.

Life-Saving Impact

831 CHILDREN
30K TRIPS
~5MM MILES

Meet Our Event Team

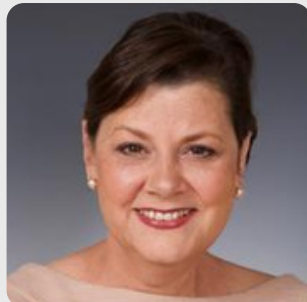


The Mike & Sandy Ernsdorff
Childhood Cancer Foundation



**DANIELLE
GOFFI**

Events@CompassToCare.org
(847) 370-9862



**DANIELLE
VILLARI SWETS**

Danielle@CompassToCare.org
(708) 280-1982



**MICHELLE
ERNSDORFF-MAY**

Michelle@CompassToCare.org
(312) 515-9490

About The Event



The Mike & Sandy Ernsdorff
Childhood Cancer Foundation

Compass to Care's An Evening of Hope is held to raise funds to remove travel barriers for children to access life-saving cancer treatment.

Join us for this annual event, featuring stunning views of the iconic downtown Chicago and the Chicago River, contemporary American tavern fare, a silent auction, and music!

During the event, we will have a beneficiary of our past support share their cancer journey and how Compass to Care has provided relief and hope during a critical time in their lives.

All funds raised at the event will be used to help more children over transportation barriers when accessing cancer treatment.



Event Highlight

FRIDAY, NOVEMBER 15, 2024

7:00 - 11:00pm

River Roast
315 N La Salle St, Chicago, IL

Food Stations. Drinks. Music.
Silent Auction. Fund A Need.

Sponsor Benefits



Compass to Care's An Evening of Hope offers a strategic way to build corporate brand and to meet your corporate social responsibility by supporting children with cancer.

BRANDING

As an Evening of Hope Sponsor, our goal is to help you increase branding by putting your logo on all of our event collateral. Sponsors will see their logo everywhere we promote the event, based on their sponsorship level.

RECOGNITION

We know how important it is for Corporate Sponsors to be recognized for their generosity. To help you achieve this recognition, we will acknowledge your support in various ways throughout the year, based on sponsorship level.

SOCIAL RESPONSIBILITY

Give your employees and colleagues an opportunity to see your corporate social responsibility in action by inviting them to use the tickets included with your sponsorship. When they join us at the event, they can experience the impact you are making for kids and families affected by childhood cancer.

Sponsorship Packages



The Mike & Sandy Ernsdorff
Childhood Cancer Foundation



Presenting

BRANDING on...

Full-page Advertisement in the Program (5.5x8.5)

Invitation and Event Material As A Presenting Sponsor

Step-and-Repeat

Website Landing Pages

Newsletters

Email Campaigns

Print & Web Ads

Press Releases

RECOGNITION...

On individual social media platforms

In another Compass to Care event as an event sponsor

DINNER TICKETS...

20 tickets for you and your guests

\$20,000



Life

BRANDING on...

Full-page Advertisement in the Program (5.5x8.5)

Invitation and Event Material

Step-and-Repeat

Website Landing Pages

Newsletters

Email Campaigns

Print & Web Ads

Press Releases

RECOGNITION...

On individual social media platforms

In another Compass to Care event as an event sponsor

DINNER TICKETS...

10 tickets for you and your guests

\$10,000



Journey

BRANDING on...

Half-page Advertisement in the Program (5.5x4.25)

Event Material

Step-and-Repeat

Website Landing Pages

Newsletters

Email Campaigns

Print & Web Ads

RECOGNITION...

On individual social media platforms

DINNER TICKETS...

8 tickets for you and your guests

\$5,000



Travel

BRANDING on...

Quarter-page Advertisement in the Program (2.75x4.25)

Event Material

Website Landing Pages

Newsletters

Email Campaigns

RECOGNITION...

On individual social media platforms

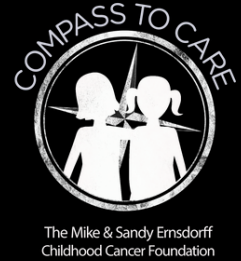
DINNER TICKETS...

6 tickets for you and your guests

\$2,500

In addition to sponsor benefits, you will be helping raise awareness of a critical need in the pediatric oncology community and supporting children who need help as they travel in search of a cancer cure.

Key Dates



**13
SEP**

Last Day To Secure Sponsorships

If you would like your information on our printed materials, your sponsorship commitment must be in by September 13.

**11
OCT**

Last Day To Submit Ads

For your advertisement to be in our program book, ads must be submitted on or before October 11.

**4
NOV**

Submit Guest Names

To ensure we are prepared for your guests, please have your guest names submitted by November 4.

**15
NOV**

An Evening of Hope

Join us for a beautiful event focused on helping children with cancer. Cocktail attire is suggested.





The Mike & Sandy Ernsdorff
Childhood Cancer Foundation

Thank you!
We would love to
have your support!

COMPLETE SPONSORSHIP INFORMATION ONLINE AT:
www.AnEveningOfHope.us

Contact

Phone 312-515-9490

Website www.AnEveningOfHope.us

Email Michelle@CompassToCare.org

Address 6323 N Avondale Ave, Ste 250, Chicago, IL 60631